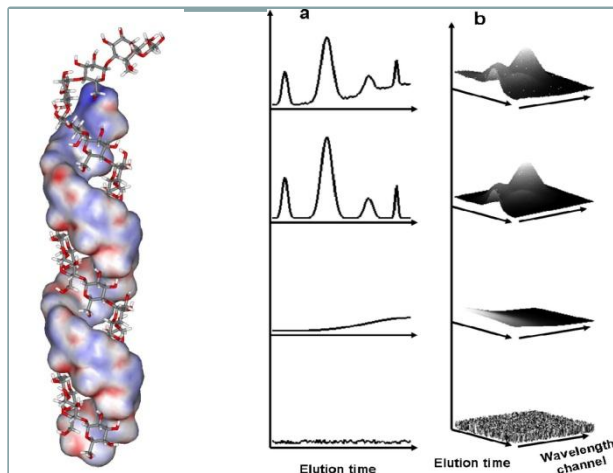


## ISSUE 23 (APRIL-JUNE 2010)



### TWO Q&T PAPERS IN CHEMICAL REVIEWS!

One about chemometric modelling of chromatographic data and one about the chemistry, structure and hydration of the alpha-glucans in starch. The scientific journal *Chemical Reviews* achieved an astonishing Impact Factor of 36 in 2009. (Nature IF = 34; Science IF = 30)

### FORMER Q&T SCIENTIST LARS NØRGAARD RESIGNS HIS POST AS HEAD OF THE DEPARTMENT

Lars has accepted a position as leader of the team responsible for developing chemometrics at the company FOSS.

### Peer-reviewed publications

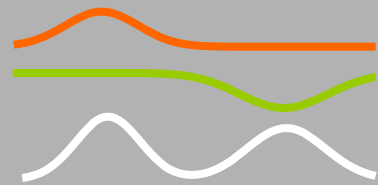
**JM Amigo, T Skov, R Bro.** ChroMATHography: Solving Chromatographic Issues with Mathematical Models and Intuitive Graphics. *Chemical Reviews*, **110**, 4582–4605, 2010

**I Damager, SB Engelsen, A Blennow, BL Møller, MS Motawia.** First Principles Insight into the alpha-Glucan Structures of Starch: Their Synthesis, Conformation, and Hydration. *Chemical Reviews*, **110**, 2049–2080, 2010

**A Blennow, SB Engelsen.** Helix-breaking news: fighting crystalline starch energy deposits in the cell. *Trends in Plant Science* **15** (4), 236-240, 2010

**F Savorani, M Kristensen, FH Larsen, A Astrup, SB Engelsen.** High throughput prediction of chylomicron triglycerides in human plasma by nuclear magnetic resonance and chemometrics. *Nutrition & Metabolism*. **7** (43) 1-8, 2010

**MA Rasmussen, M Colding-Jørgensen, LT Hansen, R Bro.** Multivariate evaluation of pharmacological responses in early clinical trials – a study of rIL-21 in the treatment of patients with metastatic melanoma. *British Journal of Clinical Pharmacology*. **69** (4), 379–390, 2010



**E Roldán-Marin, RI Jensen, BN Krath, M Kristensen, M Poulsen, MP Cano, C Sánchez-Moreno, LO Dragsted.** An Onion Byproduct Affects Plasma Lipids in Healthy Rats. *Agricultural and Food Chemistry*, **58**, 5308–5314, 2010

**P Faubert, P Tiiva, Å Rinnan, A Michelsen, JKHR Rinnan.** Doubled volatile organic compound emissions from subarctic tundra under simulated climate warming. *New Phytologist*, **187**, 199–208, 2010

**JM Amigo, MJ Popielarz, RM Callejón, ML Morales, AM Troncoso, MA Petersen, TB Toldam-Andersen.** Comprehensive analysis of chromatographic data by using PARAFAC2 and principal components analysis. *Journal of Chromatography A*, **1217**, 4422–4429, 2010

## Other Publications

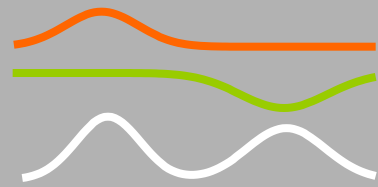
**SB Engelsen, L Nørgaard, R Bro.** Det kemometriske rum. Interval PLS – når dine variable skal udvælges med omhu. *Dansk Kemi*, **91** (4), 2010

**SB Engelsen, L Nørgaard, R Bro.** Det kemometriske rum. En kemisk forklaring! *Dansk Kemi*, **91** (5), 2010

**MD Plumbley, A Cichocki, R Bro.** Non-negative mixtures. In: P Comon and C Jutten. Handbook of BlindSource Separation . Independent Component Analysis and Applications. 1st edition. Oxford: Elsevier; pp. 515–547, February 2010

## Media

-



**Staff:**

**Jeanette Venla Hansen** (June 2010-) Secretary

**Marie Kragh** (PhD RB/DTU) May 2010-

**Tormod Næs** (CHANCE; app. 2-3 days pr month)

**Guest Researchers:**

**Sergio Garmon**, (JMA, RB; University of the Basque Country, Spain) Apr-June

**Juan Rosas**, (JMA, RB; Autonomous University of Barcelona ) Apr-June

**Paulina De La Mata** (JMA. RB) Apr

**PhD defence:**

-

**MSc defences:**

-

**Courses:**

Thematic Aroma Course: Integrated sensory and instrumental flavour research - MAP

Beer Production Course – BMJ

Thematic course PAT - THS

ODIN, Process spectroscopy/chromatography workshop 14 April - THS